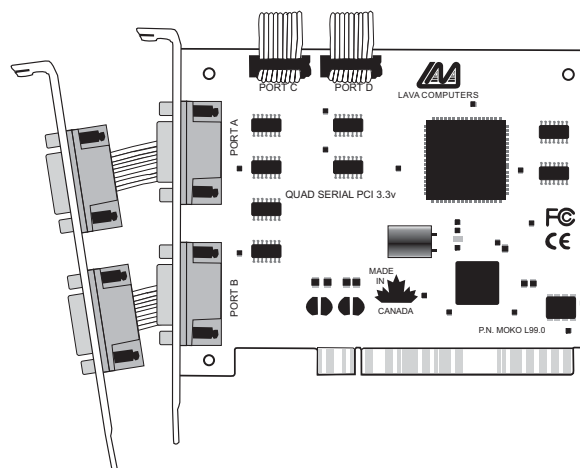




LAVA

QUATTRO-PCI 3.3V

**PCI Bus
4-Port
Serial Board
with
16550 UARTs
for 3.3 Volt PCI**



Features:

- Four 9-pin high speed 16550 UART serial ports —adds four COM ports to any 3.3 volt PCI-equipped PC. Maximum data throughput rate: 115.2 kbps on each port.
- Requires only one system IRQ —saves valuable resources for other expansion cards.
- Both ports share one PCI bus IRQ —even when accessed simultaneously.
- Automatically selects next available IRQ and COM addresses —just plug it in and go!
- Includes Lava Com Port Redirect Utility for renaming COM Ports —allows for backward compatibility with software that supports COM 1-4 only.
- Compatible with RS-232 serial peripherals —including modems, PDAs, digital cameras, bar-code scanners, and UPSes.
- Compliant with PCI Specification 3.0
- Lava Lifetime Warranty

Lava: "The Source For Ports"



LAVA COMPUTER MFG INC.

2 VULCAN STREET, TORONTO, ON CANADA M9W 1L2

TEL: (416) 674-5942

FAX: (416) 674-8262



www.lavalink.com

Rev. B00